

Prioré's revolutionary results in lab animals

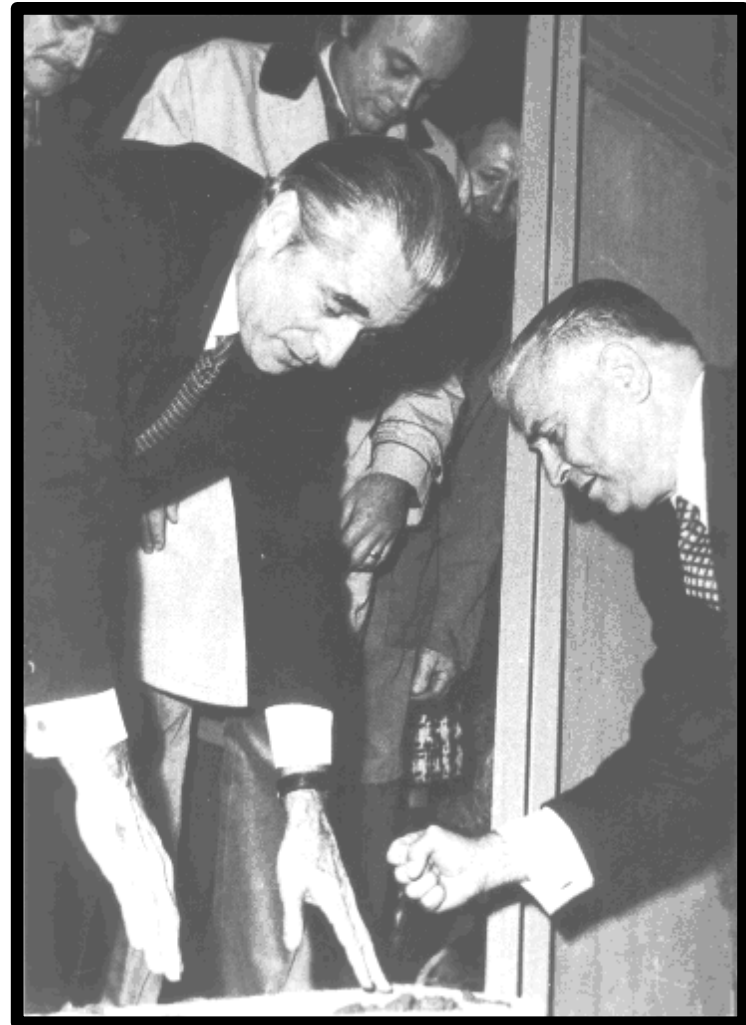


And its ramifications



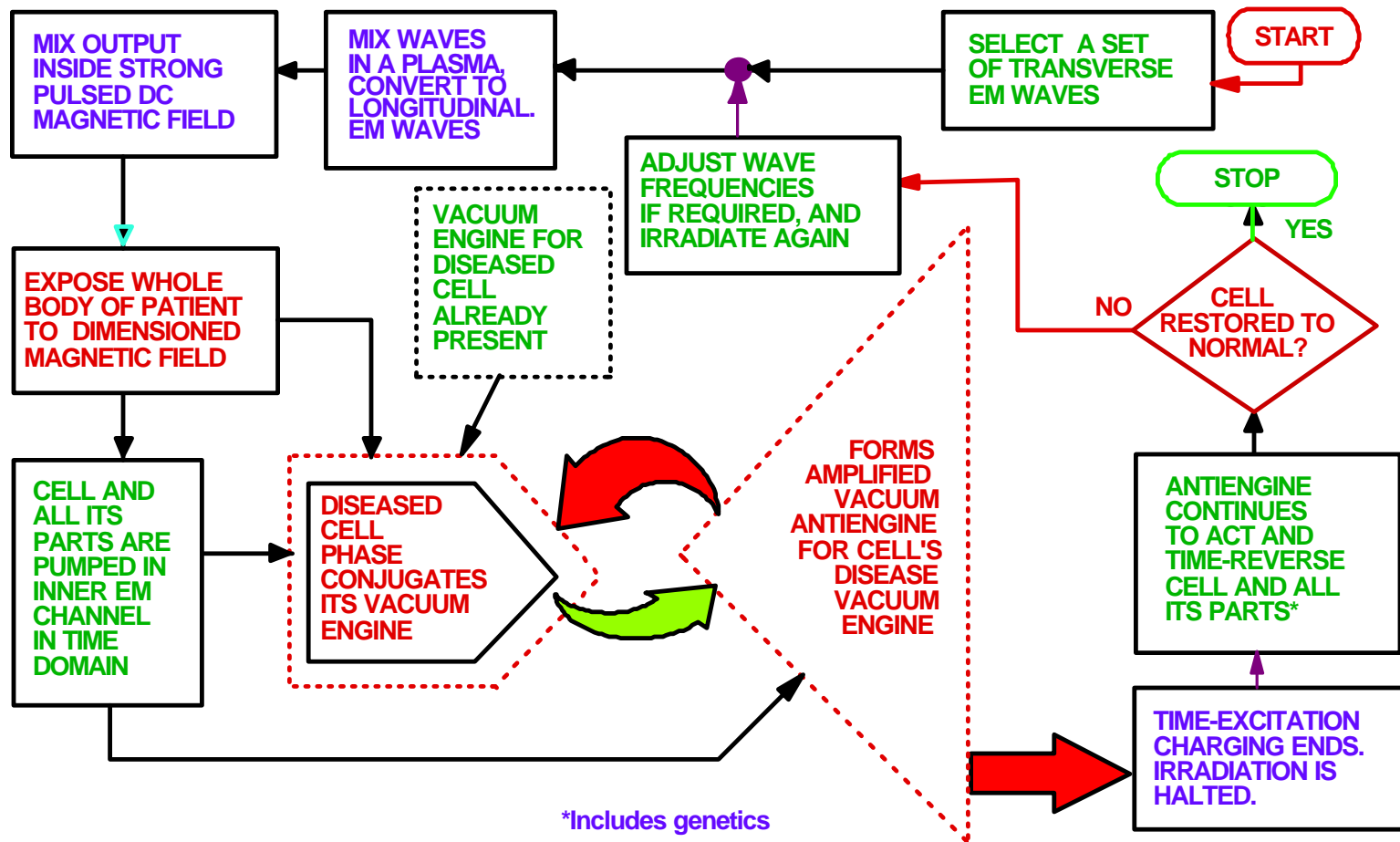
Prioré (right) makes a point to Chaban-Delmas, Mayor of Bordeaux

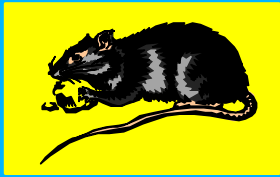
- Many of the Prioré team's experiments were done in Bordeaux.
- Antoine Prioré patents:
 - ▶ "Apparatus for producing radiations penetrating living cells," U.S. Patent No. 3,368,155, Feb. 6, 1968.
 - ▶ "Method of producing radiations for penetrating living cells," U.S. Patent No. 3,280,816, Oct. 25, 1966.
 - ▶ "Procéde et dispositif de production de rayonnements utilisables notamment pour le traitement de cellules vivantes," [Procedure and Assemblage for Production of Radiation Especially Serviceable for the Treatment of Living Cells], Republique Francais Brevet d'Invention P.V. No. 899.414, No. 1,342,772, Oct. 7, 1963.



Block diagram of Prioré's method

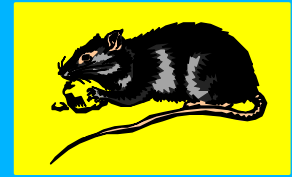
Time-reversing the cells back to normal state





In Laboratory Animals:

Prioré Team Cured

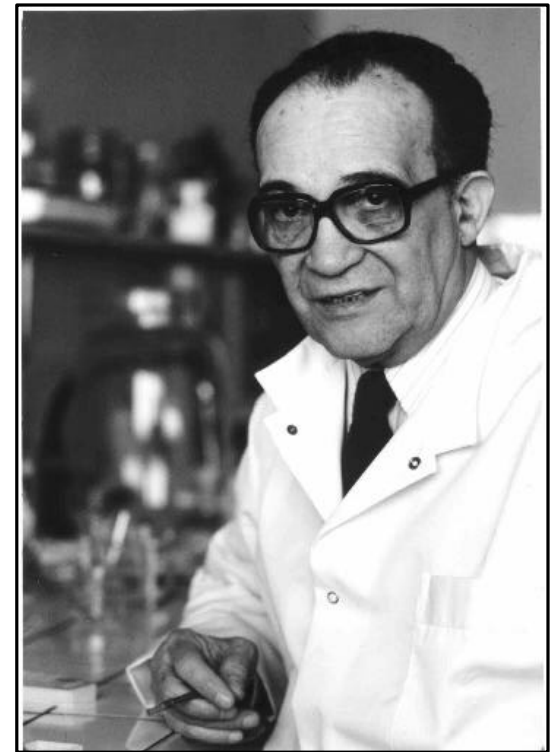


- **Terminal malignant tumors**
- **Clogged arteries (atheriosclerosis)**
- **Suppressed Immune Systems**
- **Infectious trypanosomas**
- ***Results were presented to French Academy of Science by Robert Courrier, Director of the Biology Section of the Academy***
- ***No one understood the mechanism!***

© 1999 T. E. BEARDEN

Proof of cellular time-reversal

- Pautrizel compared identical treatment of immature rats with immature immune systems, and mature rats with mature immune systems.
- Treatment restored the damaged mature system back to full mature functioning, and it promptly recognized and dispatched the pathogens.
- Treatment restored the damaged immature system back to full immature functioning, unable to cope, and the pathogens promptly reinfected and killed the immature rat.
- The lesson: The body is indeed returned to a previous physical state. The pathogens themselves are not killed by the treatment, but by restoring the ability of the immune system to recognize and destroy them.
- Only the *previous ability* of the immune system is restored by the process.



PROF. RAYMOND PAUTRIZEL
(Renowned Parasitologist)

Disadvantages of Prioré method

- Large plasma tube and facility required.
 - 3-stories high building bay if to treat humans.
 - Long irradiation time (2-3 hours).
 - Slow, numerous experimental adjustments.
- Fundamental mechanism was unknown.
 - Phase conjugate optics not yet born in West.
 - No higher symmetry EM modeling used.
 - Prioré thought it was a result of ionization.
 - Importance of difference frequency unknown.
 - Body dielectric transmission path unknown.

3-Story high Prioré device for treating humans

- At the end of the project, Prioré had developed a large unit to treat humans.
- A few were treated.
- Cures replicated what had been done in lab animals
- The massive size of the unit and long treatment time (hours) made the process bulky and very inconvenient -- and also expensive

